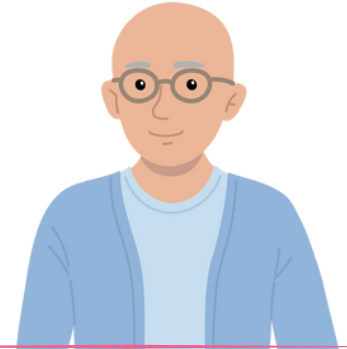




JOHN: RTA & STROKE RECOVERY

John, 52, came to Hamberley Neurocare following a serious road traffic accident and left MCA infarct (stroke) in early 2024. He had significant physical, cognitive, and communicative impairments and was initially dependent on assistance for all activities of daily living.



GOALS & OUTCOMES

GAS

GOAL ATTAINMENT SCALING

+23

34.7 baseline to 57.7 on discharge

FIM+FAM

+36

200 on admission to 236 on discharge

TO LIVE INDEPENDENTLY AT HOME

John's primary aim was to return home and live independently. After assessment, he began a programme of rehabilitation with physical & occupational therapy.



STEP 1

REHABILITATION FLAT LIVING

Through targeted therapy and nursing support, he progressed from needing full assistance to living independently in our rehabilitation apartment.

STEP 2

WALKING INDEPENDENTLY

John worked hard with the therapy and nursing teams and progressed from short, assisted indoor walks to confidently mobilising over 1 km outdoors using a walking stick.

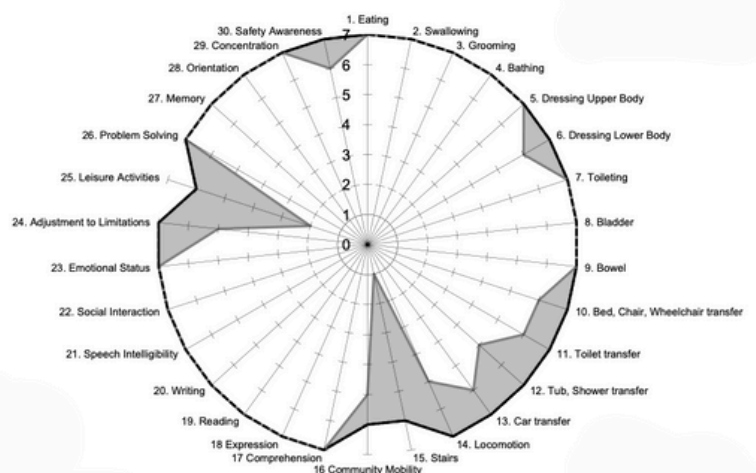
STEP 3

COMMUNITY VISITS & RETURN HOME

John visited local shops, including to his local motorbike shop, enjoyed family time, and confidently navigated busy social situations. John returned home after 9 weeks of neurorehabilitation.



John with the therapy team



Empowering recovery, restoring lives