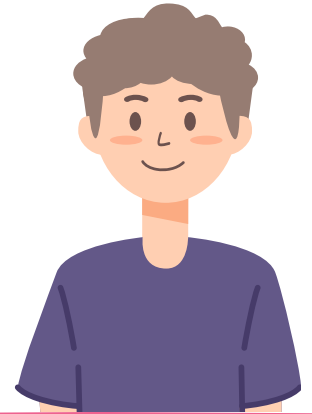




## GRAHAM: STROKE RECOVERY

Graham, 66, came to Hamberley Neurocare in 2024 following a left Basal Ganglia and intracranial haemorrhage. On admission, he presented with significant right-sided weakness, complete loss of sensation on that side, dyspraxia, and executive function difficulties. He also had expressive and receptive dysphasia, which made communication extremely challenging and left him visibly frustrated.

On admission, he required a Sara Stedy for all transfers and needed full support for personal care and mobility.



## GOALS & OUTCOMES

### TO REGAIN FUNCTIONAL INDEPENDENCE

Graham's goals focused on improving his ability to move, manage his personal care, and increase independence ahead of returning home. With support from the interdisciplinary team, he has made meaningful progress in all areas of daily living.



### REHABILITATION AND EARLY PROGRESS

Initially dependent for most tasks, Graham engaged positively with physiotherapy, occupational therapy and speech therapy. Sessions focused on improving his strength, coordination, and communication, while also addressing frustration linked to reduced speech.

#### STEP 1

### LIVING WITH GREATER INDEPENDENCE

Graham now lives in the independent apartment, where he manages safely between staff visits and confidently calls for support when needed. Over five months of intensive rehabilitation, he has progressed from requiring full assistance to completing everyday tasks with minimal support. He can now shower independently, step transfer with supervision, and walk up to 30 metres in therapy with one-to-one assistance. He's also able to make a bacon and egg sandwich with set-up support and can safely transfer in and out of a car—both important milestones as he prepares for discharge home.

#### STEP 2

### RECONNECTING WITH ACTIVITIES OF DAILY LIVING

Graham has enjoyed time at home on leave and actively participates in outings, including visits to local cafés and pubs. His confidence and ability to manage in the community have grown, supporting future discharge planning.

#### STEP 3

## MEASURING SUCCESS

### FIM+FAM

+18

122 on admission to 140 five months later

### 10 METRE WALK TEST TIME IN SECONDS

-106

106 seconds quicker first and last tests

*Empowering recovery, restoring lives*